

A VÁROSLIGETI LEPEL

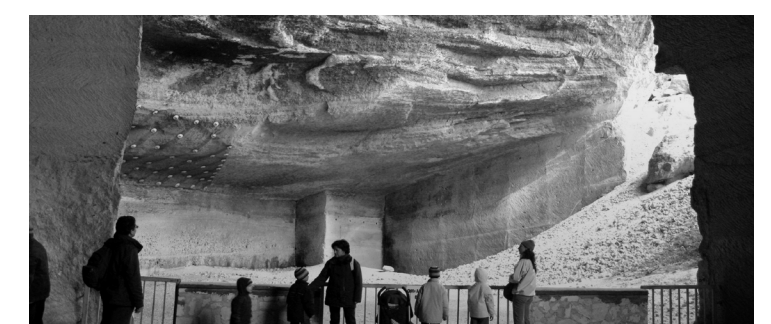
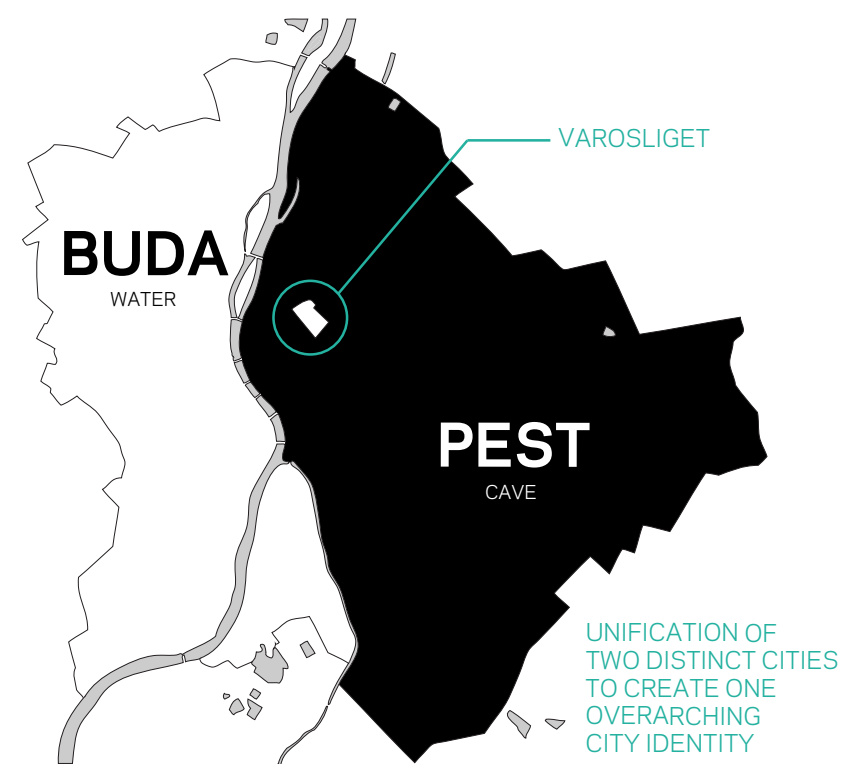
BUDA AND PEST

The history of the City Park is marked by the constant attention to its civic green space. Throughout the centuries, the evolution of the City Park has seen an ebb and flow of new construction paralleled by the enrichment of the surrounding recreational areas. This process has resulted in a dense yet constructed landscape that reflects the wide range of culture and the city's appreciation for lush, open greenspace. The etymology of Buda and Pest can be traced to their geo-morphologic bases: "Buda" refers to water and "Pest" means cave. Water is a central feature of public life in Budapest, with an abundance of thermal baths serving as social platforms. It is a giver of life and has the ability to shape and form materials it interacts with.

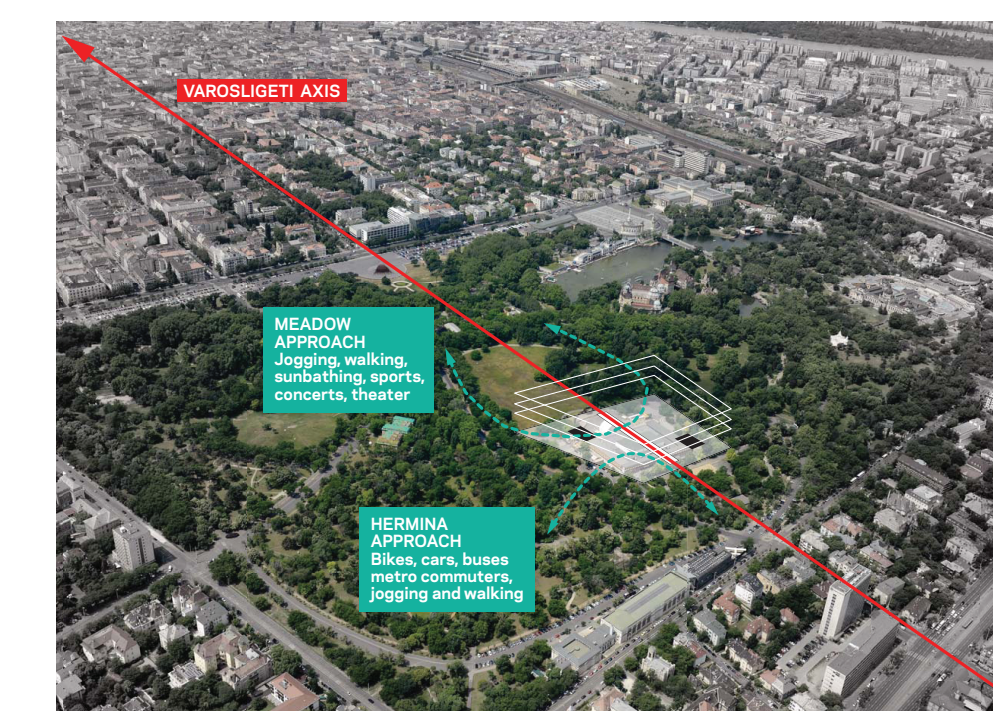
The caves and quarries of the surrounding region are symbols of the past. Throughout the centuries, the limestone quarries of the region have served as building blocks for neighboring countries and public buildings. Whether shaped by nature or quarried, the unique limestone strata is a record of time. Embedded with fossils, it has the ability to preserve layers of history. Much like the trees in the City Park, the caves and quarries represent a quiet and sheltering place and have the capacity to "shroud" or protect. In recent times, the Rákosszentimre limestone quarry in Fertőrákos has become a monument in its own right, being named a UNESCO World Heritage Site for its sculptural quality. The New National Gallery and Ludwig Museum will therefore represent both the geology and the culture of the country and its capital city. We envision our building as a merging of these two archetypal attributes, clad in a shroud we call 'A Városligeti Lepel'.

PARK AXIS

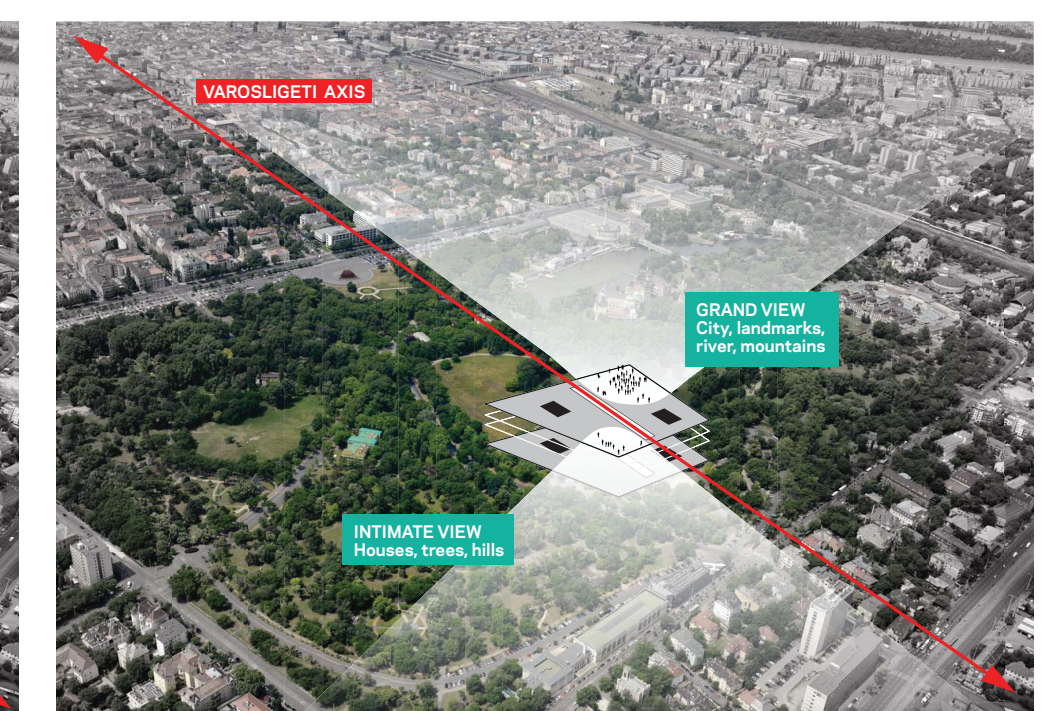
In a simple yet strong gesture, a new pedestrian promenade will meander along the edge of the existing City Park meadow. It will better connect the park and its existing desire lines with the eastern and western edges of the greater city beyond. This proposed serpentine path will reinforce an organic, axial connection among the many new museums including: the new museums of Architecture and Photography, the new House of Hungarian Music, and the New National Gallery and Ludwig Museum. The path will provide increased access to the existing open meadow while reinforcing the Park's historic past as a sanctuary of urban ecology. The path will create an interesting sequence of space as it weaves in and out of the woods to complete its route. Scattered plantings of cherry trees sited in drifts will act as way-finding devices with their colorful, seasonal bloom.



GROUND LEVEL: EROSION OF MASSING & RECEIVING THE LANDSCAPE



ROOF LEVEL: EROSION OF MASSING & CONTEXTUAL VIEWS





LANDSCAPE CONCEPT

The landscape design consists of an organization of serpentine bands or striations that respond to the organic geometry of the museum building and the topology of the historic park setting. Landscape curvatures are ultimately derived from the museum's roof section, thus establishing a relationship between building and landscape. The subtle integration of building and landscape through curvature, within the park context, generates an overall impression of movement and natural rhythms

THE GREEN ROOF MEADOW

The proposed green roof consists of a 300mm soil growing medium. At the green roof level, the serpentine bands of landscape will contain plantings of meadow grasses and wildflowers that are divided by 1-meter wide lines of crushed blue glass. Light and dark gray paving is integrated with planted areas at terrace locations. The wildflowers will create broad drifts of color across the canvas

of the grasses, creating an undulating visual amenity for terrace users. This amenity will be further enhanced by natural breezes, which will reinforce the sensation of movement created by the plantings. Roof water will be captured and stored for reuse. It will be used for irrigating the meadow and other museum landscape plantings. Our inspiration for the Green Roof Meadow comes from Pal Szinyei's 1896 painting "Meadow With Poppies", which resides in the Hungarian Nation Gallery collection

GROUND LEVEL TERRACES

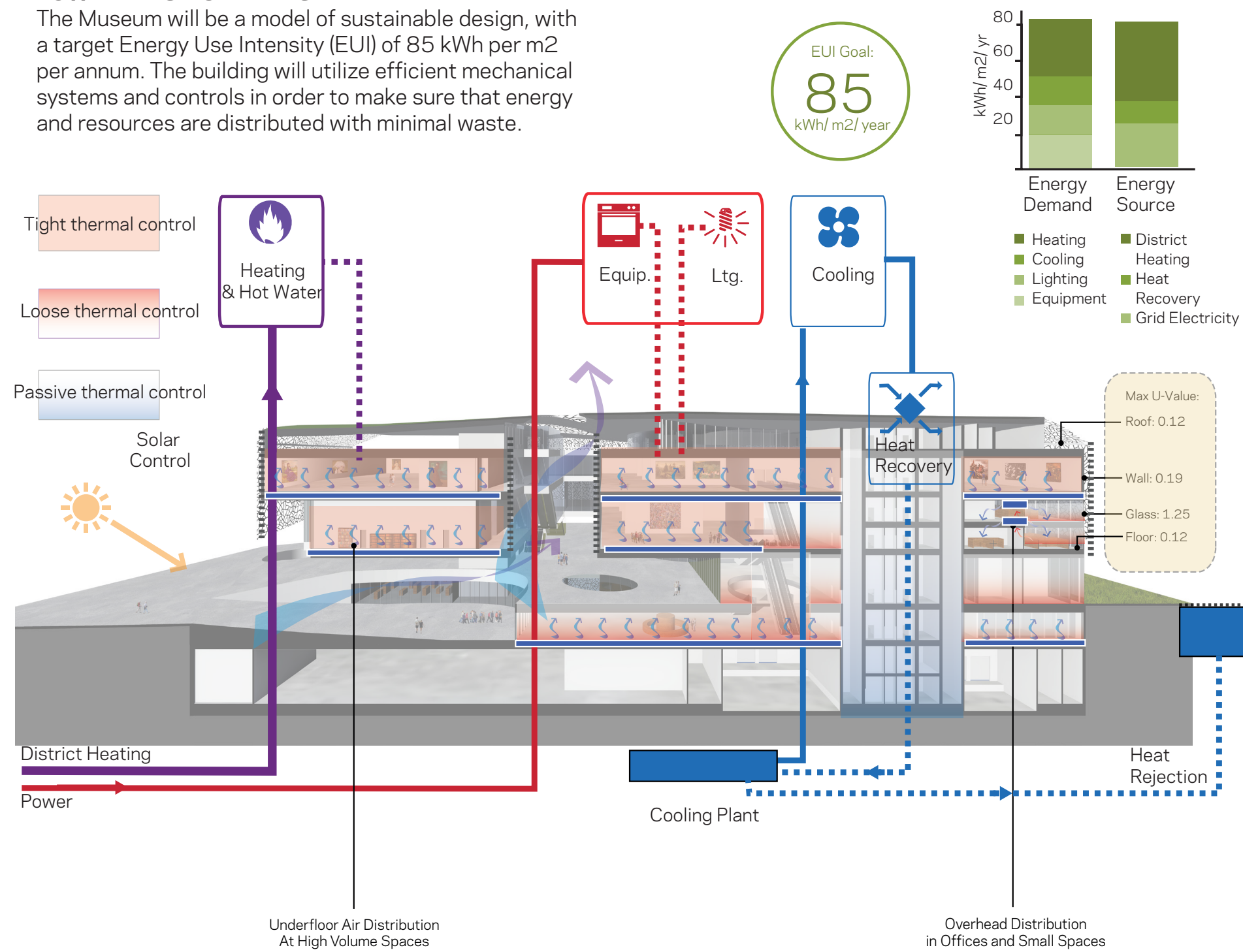
The serpentine lines of the roof landscape are projected down to the ground plane to create patterns of light and dark grey stone paving at major entry locations. A dramatic waterfall feature will anchor the main entry terrace. Water will fall through the oculus from the roof level into a pool at the terrace level. The sound of falling water and reflected sparkles of light will animate the museum's entrance.

Meadow With Poppies, Pal Szinyei, 1896



LOW ENERGY STRATEGY

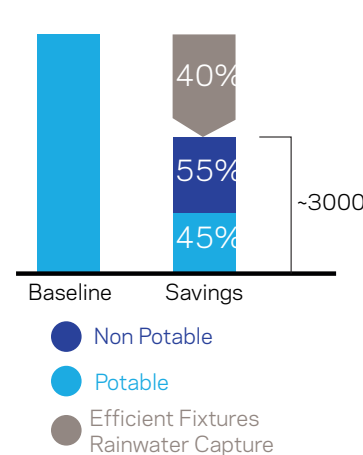
The Museum will be a model of sustainable design, with a target Energy Use Intensity (EUI) of 85 kWh per m2 per annum. The building will utilize efficient mechanical systems and controls in order to make sure that energy and resources are distributed with minimal waste.



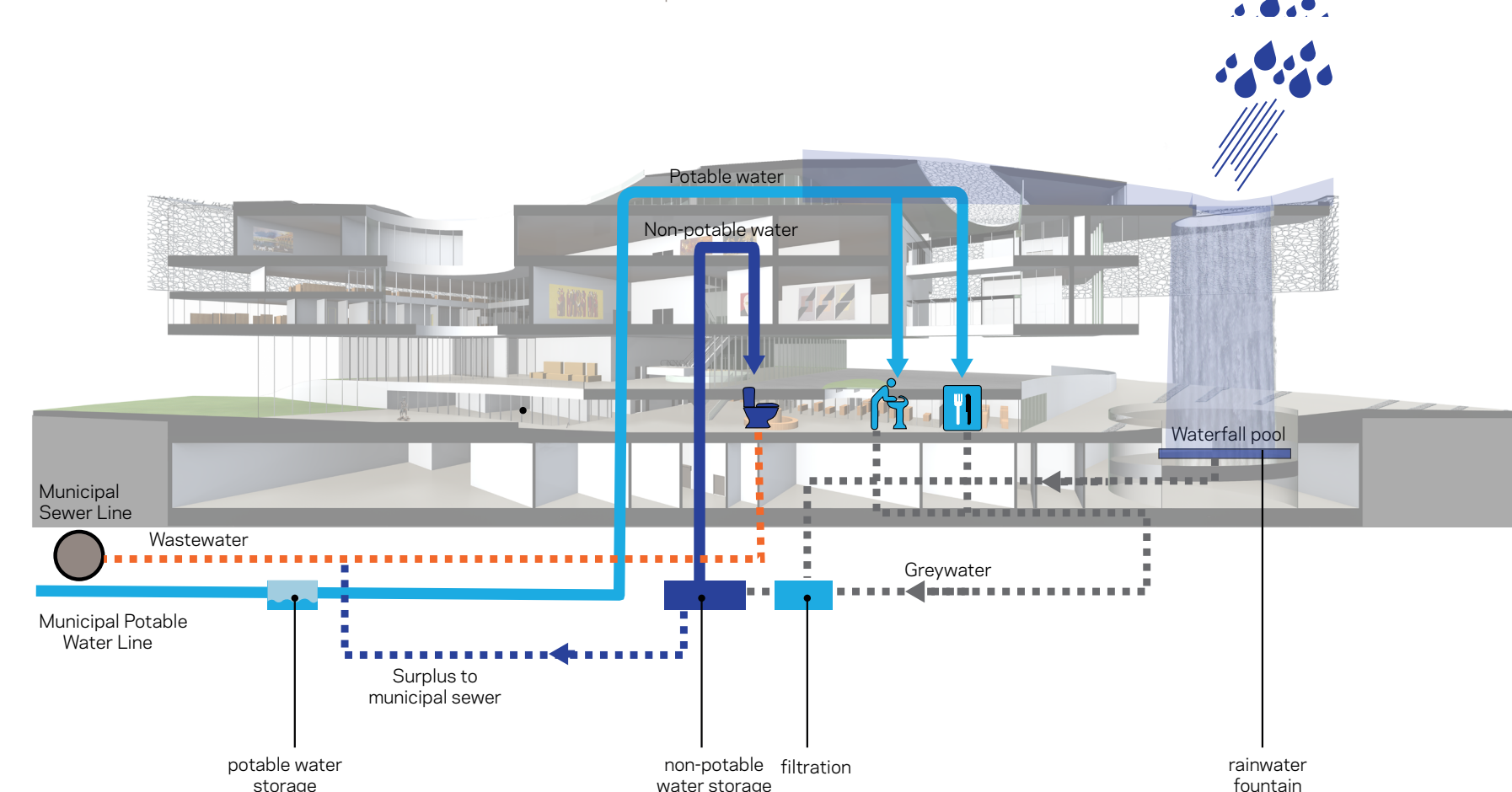
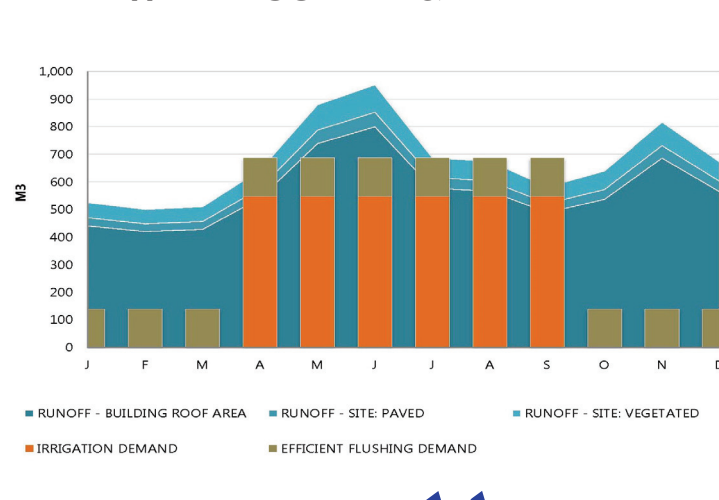
RAINWATER HARVESTING AND REUSE

The green roof will be the primary rain-water capture surface. The rain water storage will be incorporated into the water fall system design at the entry terrace. The waterfall pool will serve as the visible part of the rain re-capture and reuse system. Below-grade cisterns will provide water capacity for the waterfall and irrigation supply needs.

BUILDING WATER SAVINGS



RAINWATER SUPPLY & DEMAND



LEVEL +0

1:250 SCALE

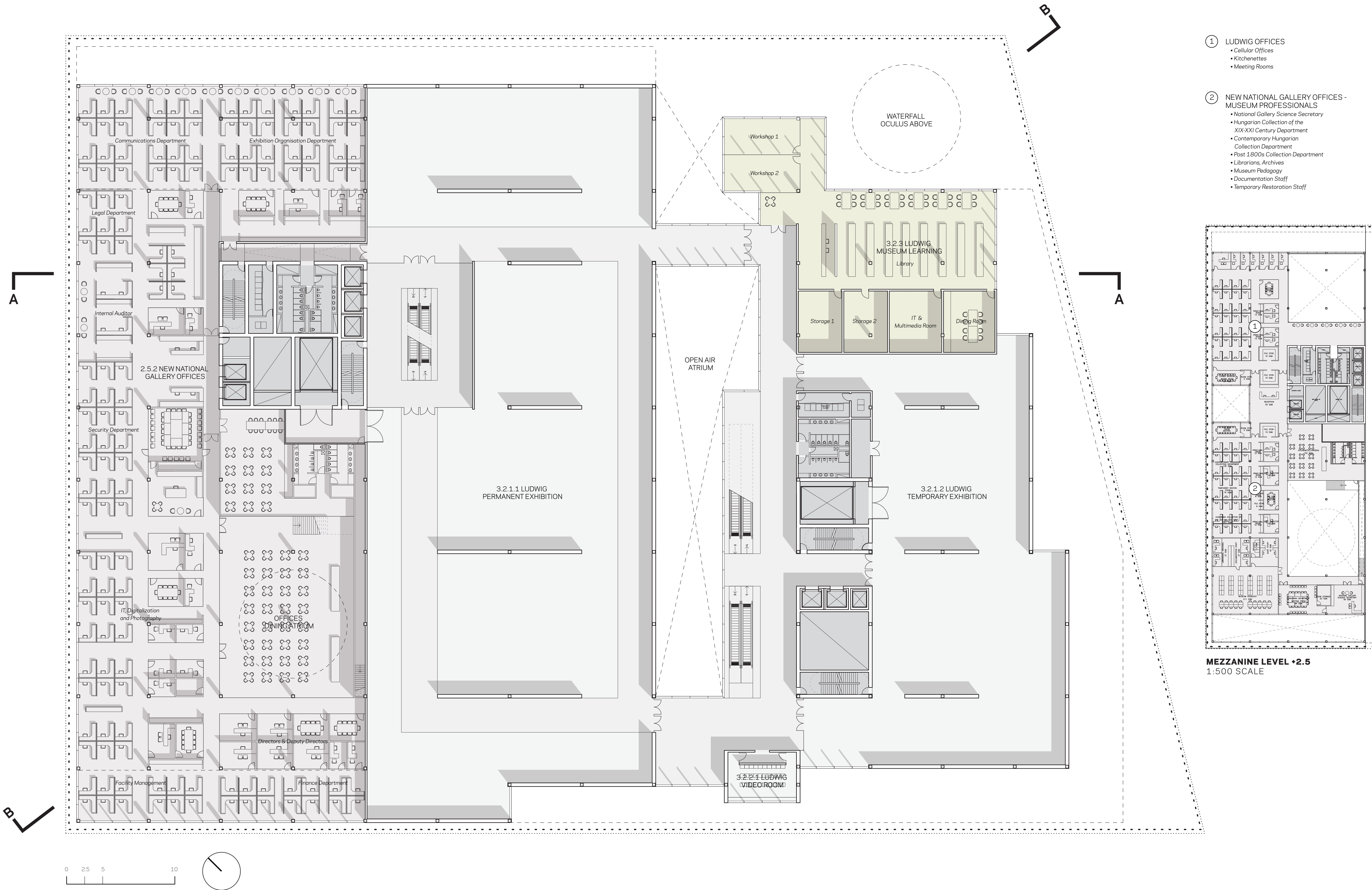
ELEVATORS

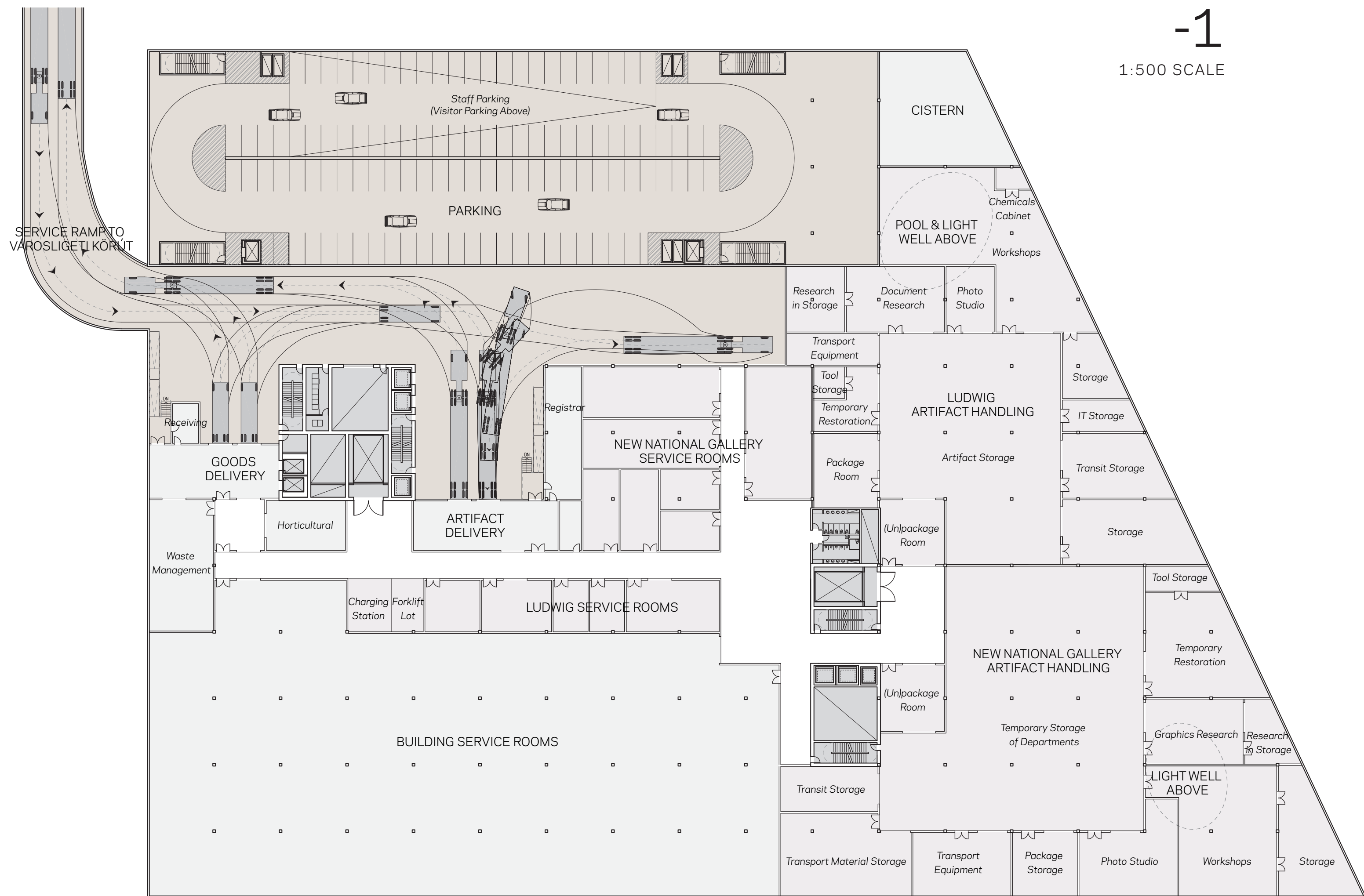
- NG New National Gallery
- LW Ludwig Museum
- G GAIA
- E Roof / Events
- S Staff
- CP Collections Permanent
- CT Collections Temporary
- P Parking

ENTRIES

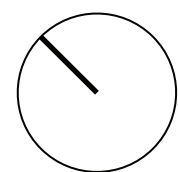
- Public Entry
- Staff Entry
- Ticketing Checkpoint





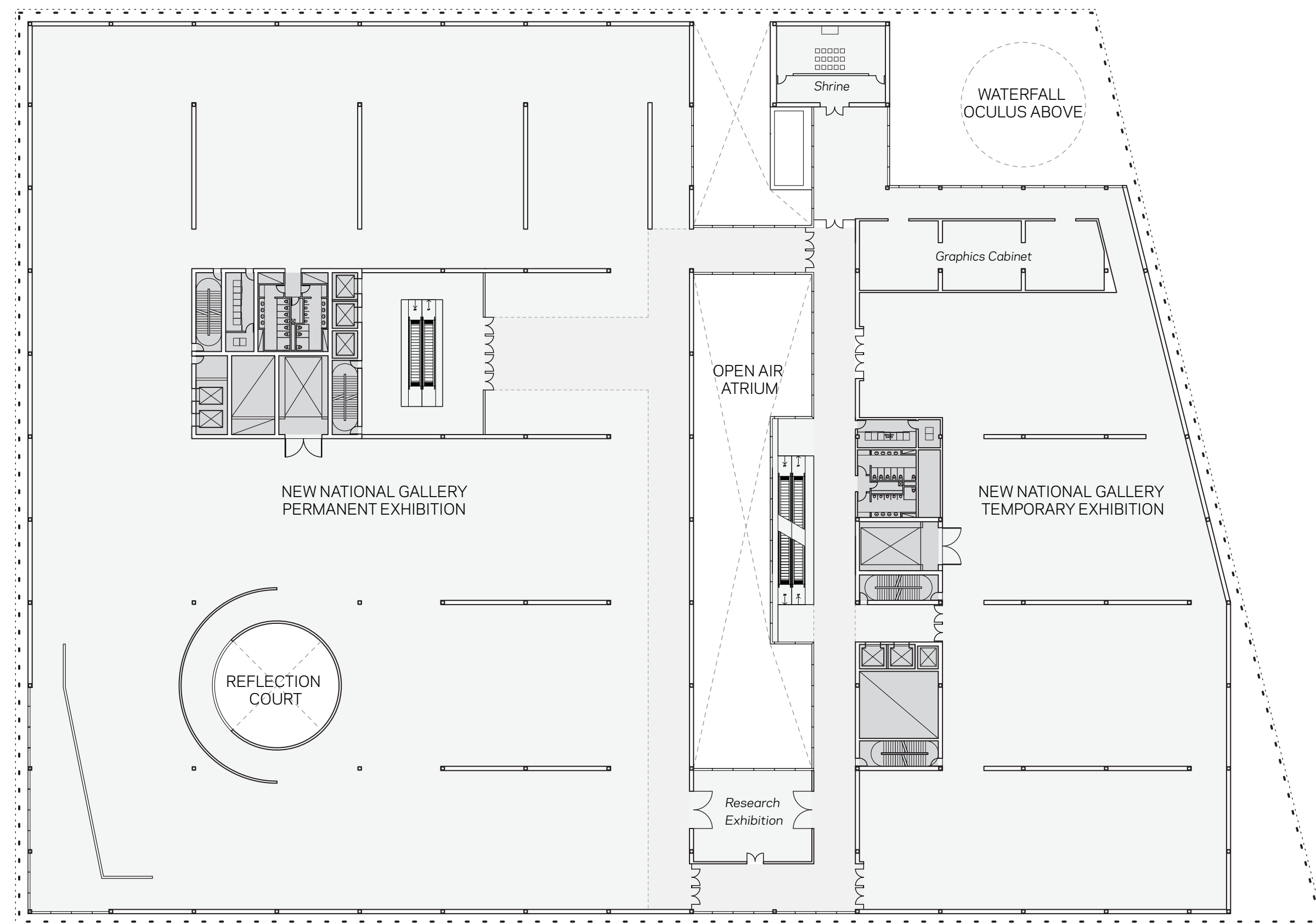


0 2.5 5 10 20



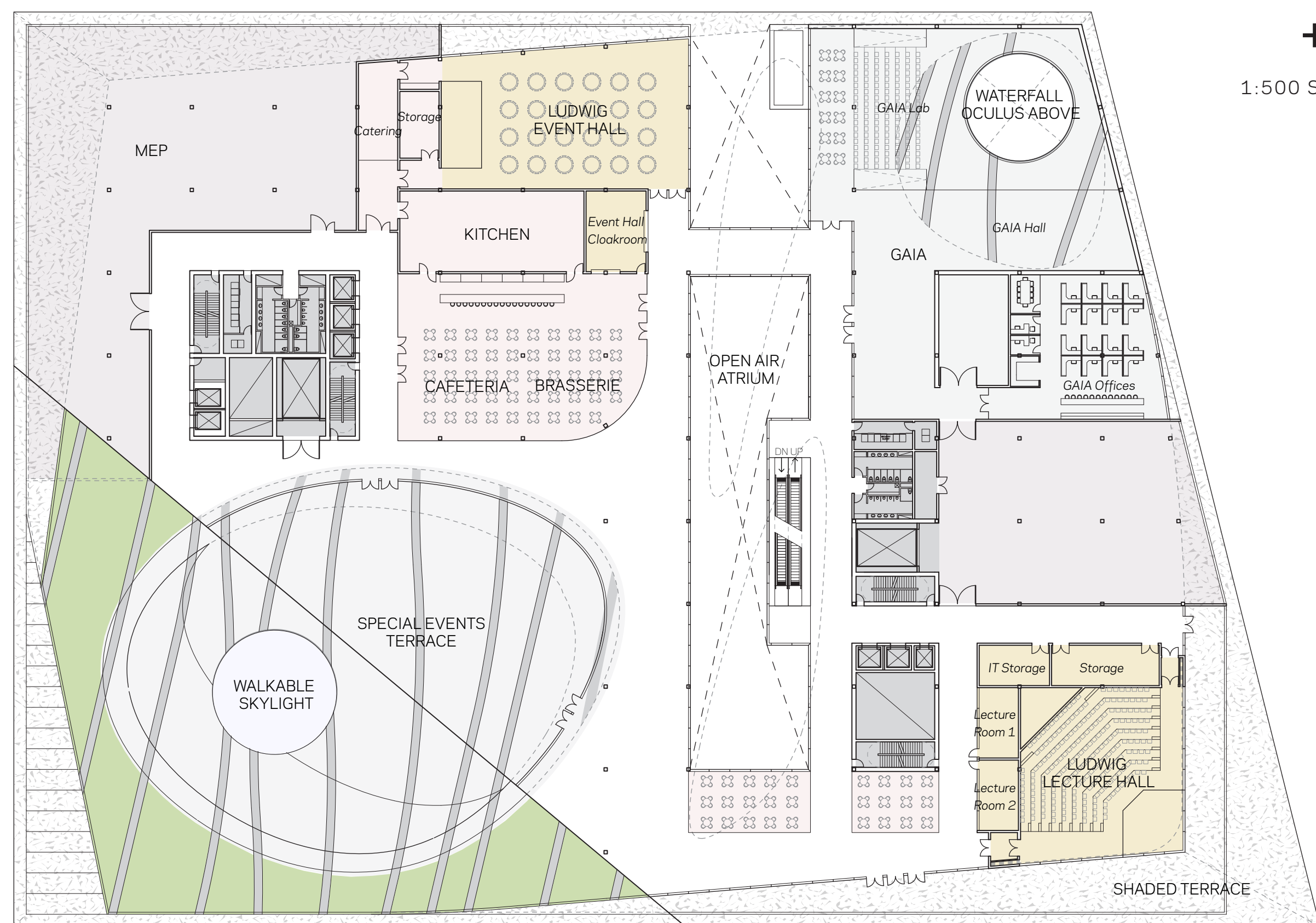
-1

1:500 SCALE



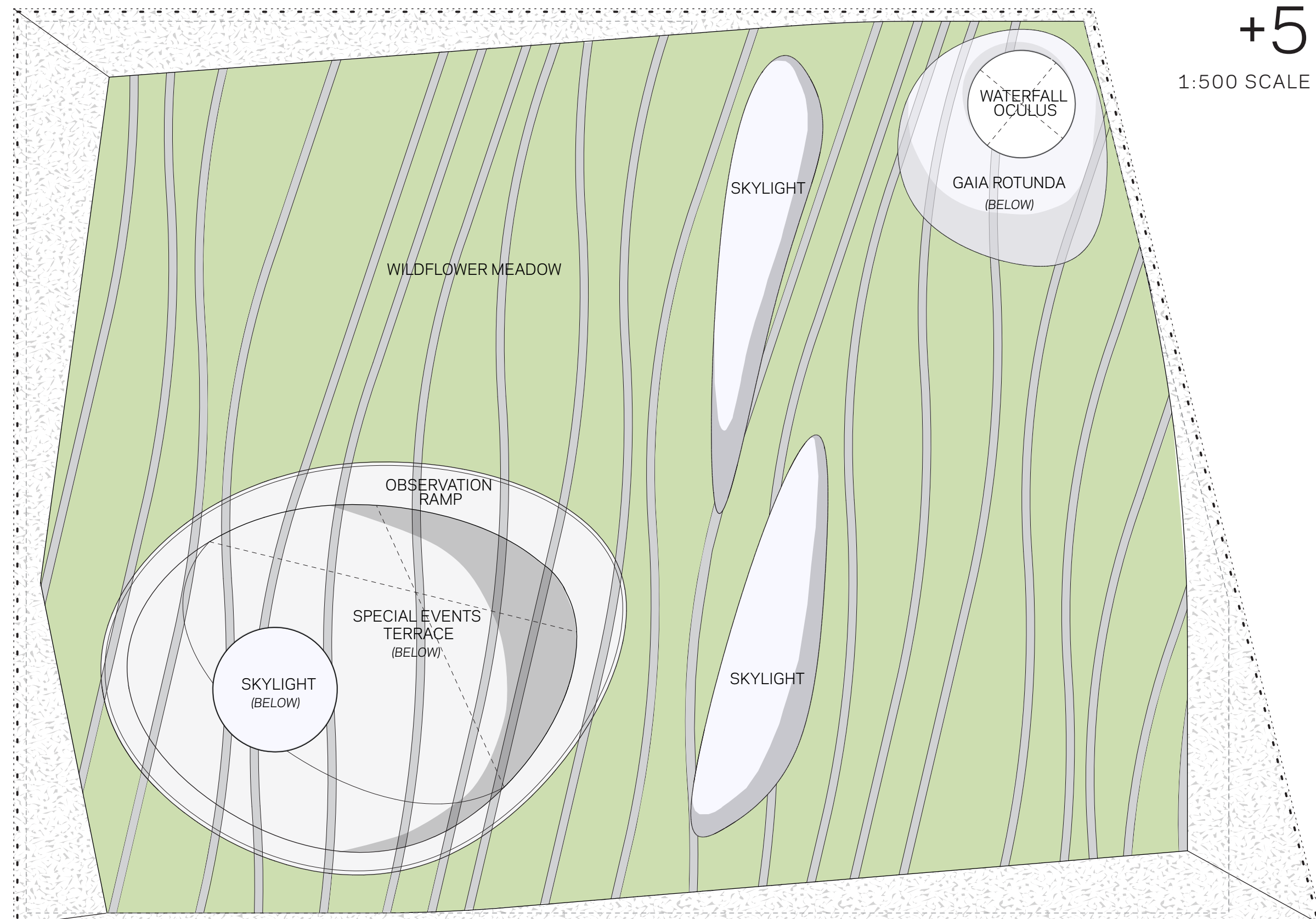
+3

1:500 SCALE



+4

1:500 SCALE

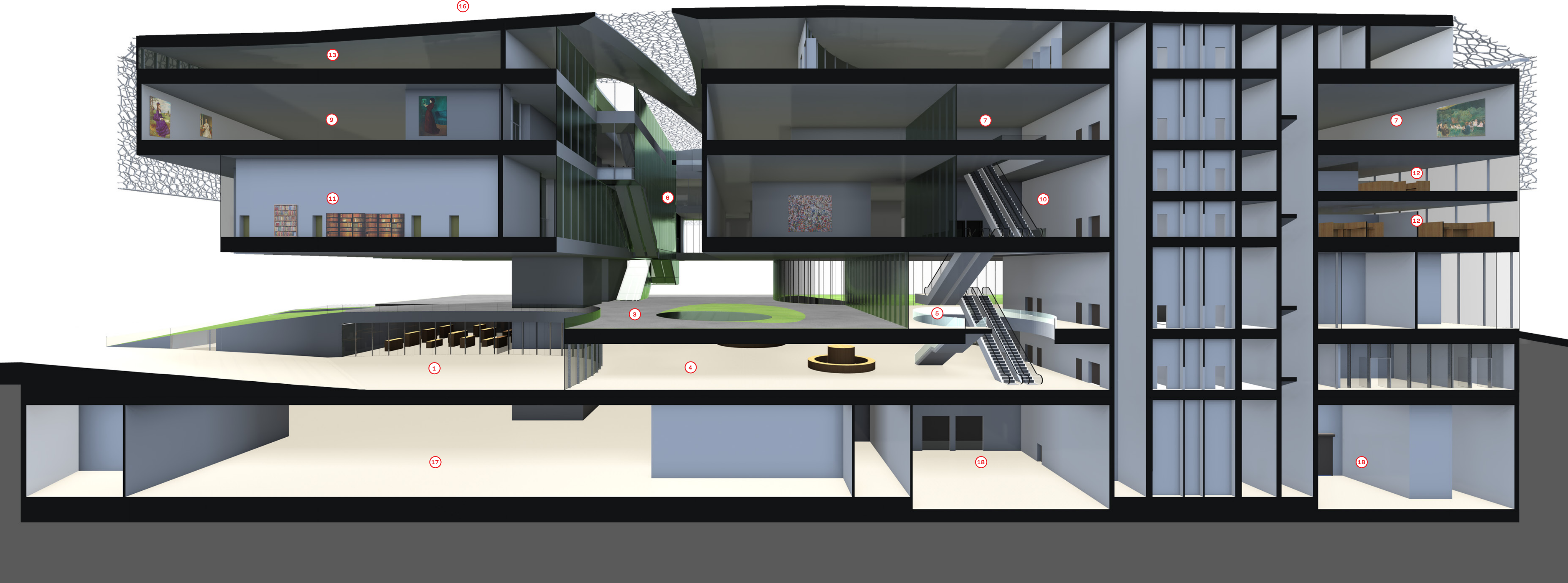


+5

1:500 SCALE

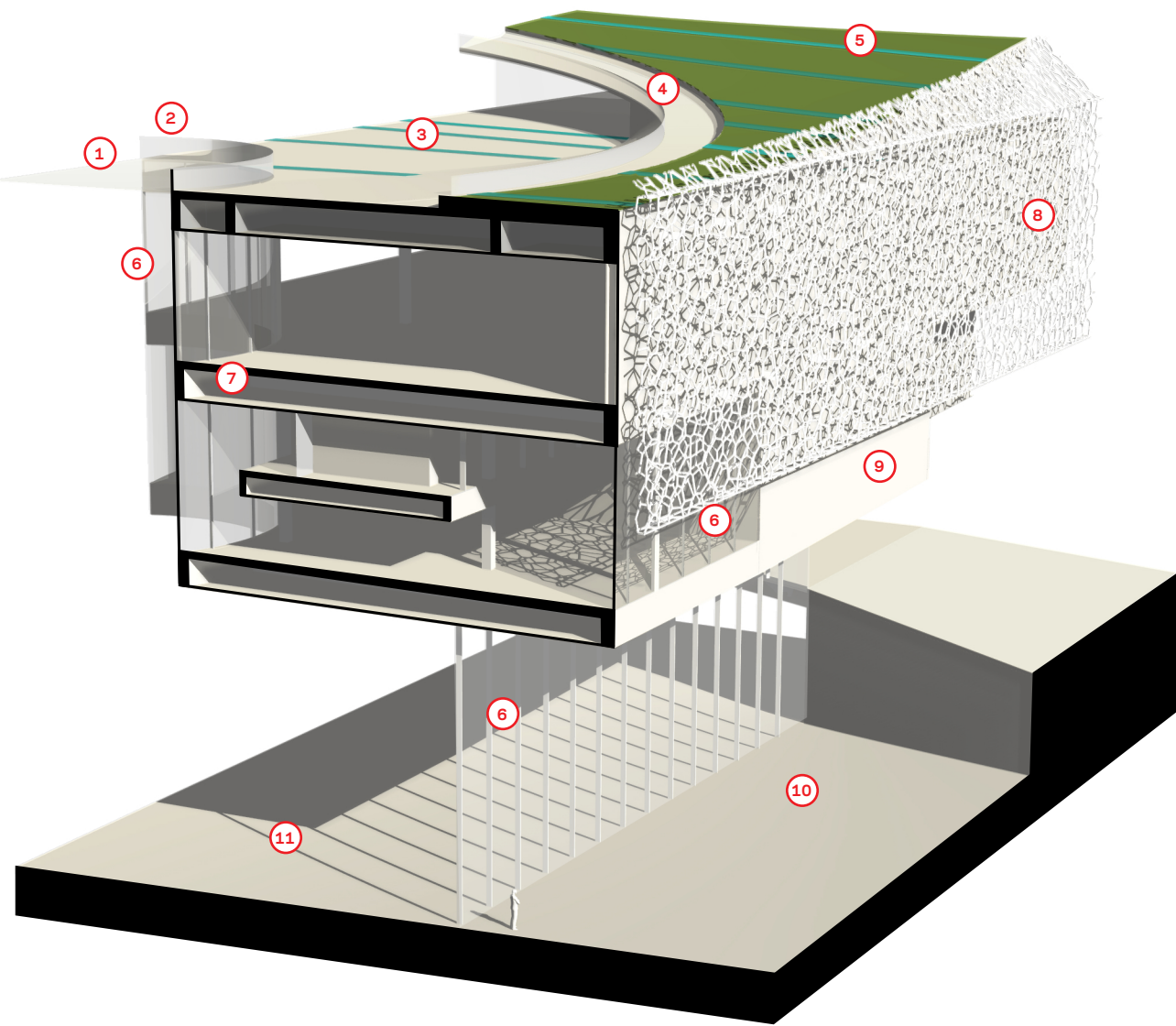
SECTIONS

SECTION A-A THROUGH CORE
1:250 SCALE



1. HERMINA ENTRY PLAZA
2. MEADOW ENTRY PLAZA
3. ELEVATED PLAZA
4. RECEPTION
5. EVENTS
6. ATRIUM
7. NEW NATIONAL GALLERY PERMANENT COLLECTION
8. SCULPTURE ATRIUM
9. NEW NATIONAL GALLERY TEMPORARY COLLECTION
10. LUDWIG PERMANENT COLLECTION
11. LUDWIG TEMPORARY COLLECTION
12. OFFICES
13. GAIA
14. SPECIAL EVENTS TERRACE
15. OBSERVATION RAMP
16. ROOFTOP MEADOW
17. ARTIFACT HANDLING
18. BUILDING SERVICES

HIGH-PERFORMANCE FACADE
SYSTEMS & MATERIALITY



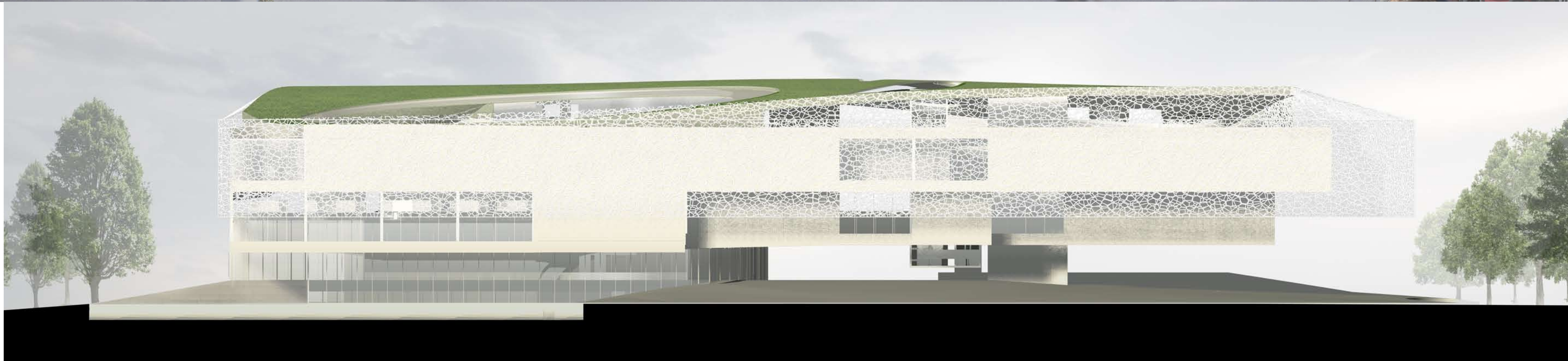
1. LIGHTWELL
2. LAMINATED GLASS GUARDRAIL
3. SPECIAL EVENTS TERRACE
4. OBSERVATION RAMP
5. GREENROOF MEADOW
300mm soil growing medium with meadow grass and wildflower plantings separated by 1M wide accents of crushed blue glass.
6. HIGH-PERFORMANCE INSULATED CURTAIN WALL SYSTEM
Triple-glazed structural igu w/ thermally broken frame. Insulated spandrel at edge of slab, typical. Double-height at main entry.
7. COMBINED STRUCTURAL SYSTEM
Reinforced Concrete and Engineered Steel Trusses at Cantilever locations
8. CULTURAL SHROUD
Ductile UHPC "shroud" or facade screen inspired by leaf veining patterns; Shroud is supported on outriggers tied back to a built truss system.
9. STONE FACADE
Insulated, Panelized Limestone.
10. EXTERIOR STONE PAVING
11. MARBLE INTERIOR FLOORING
- PROPOSED PERFORMANCE CRITERIA
External Wall: 1.9 (W/m2 °K)
Roof: 1.2 (W/m2 °K)
Floor Slab: 1.2 (W/m2 °K)
Glazing/Metal: 1.25 (W/m2 °K)

SECTION B-B THROUGH PLAZAS
1:250 SCALE

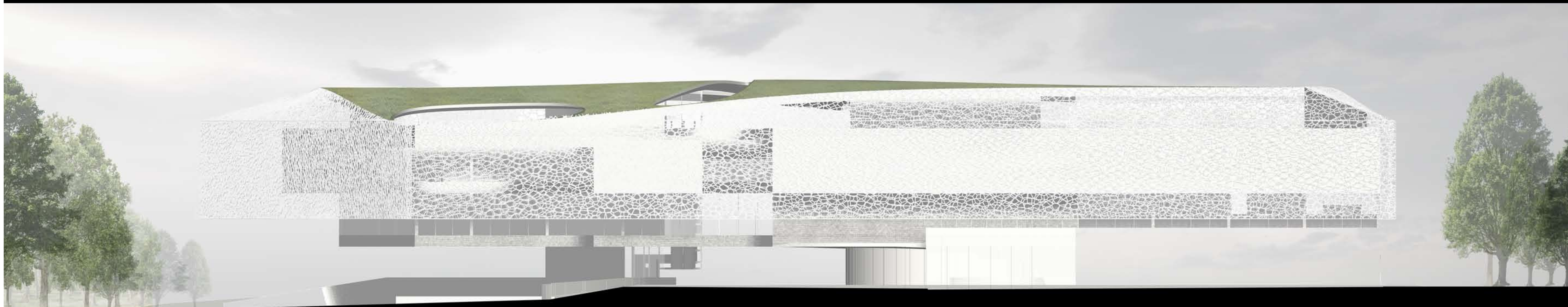




SOUTH ELEVATION
1:250 SCALE



NORTH ELEVATION
1:250 SCALE



A VÁROSLIGETI LEPEL



EAST ELEVATION
1:250 SCALE



WEST ELEVATION
1:250 SCALE

