

WORKS

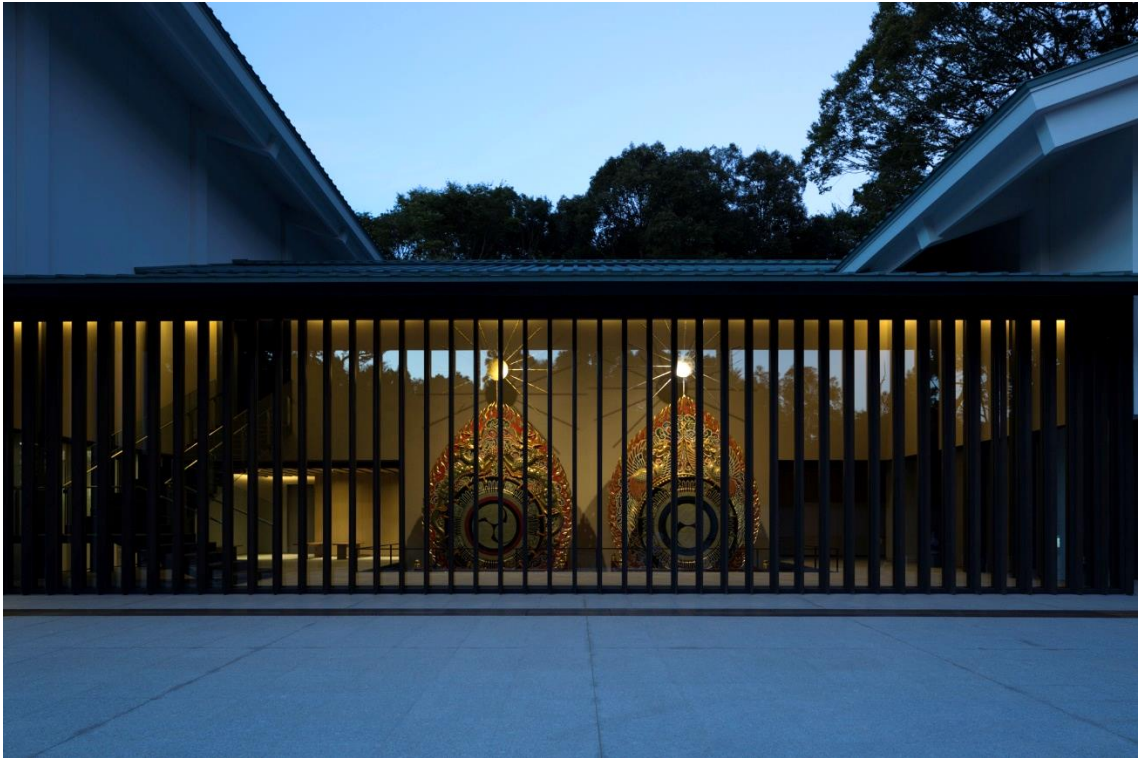
TOSHIO YADA

Kasugataisha Museum (museum)

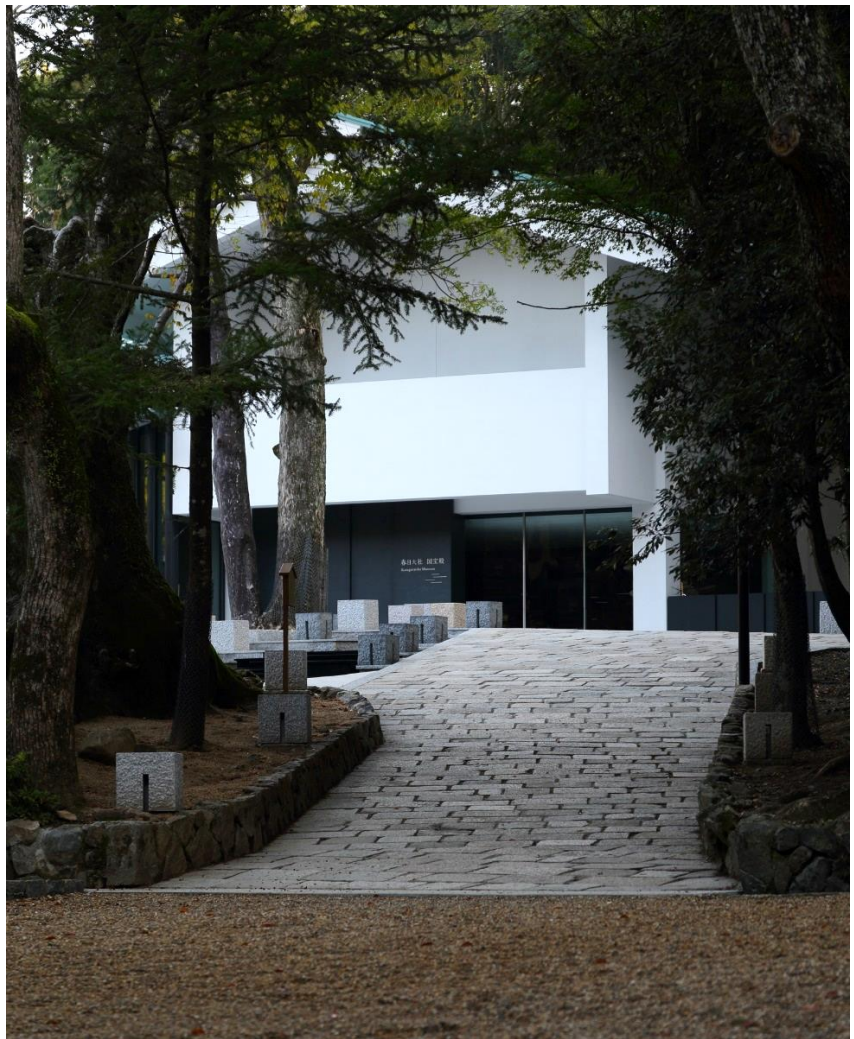
Nara, Japan (2016)

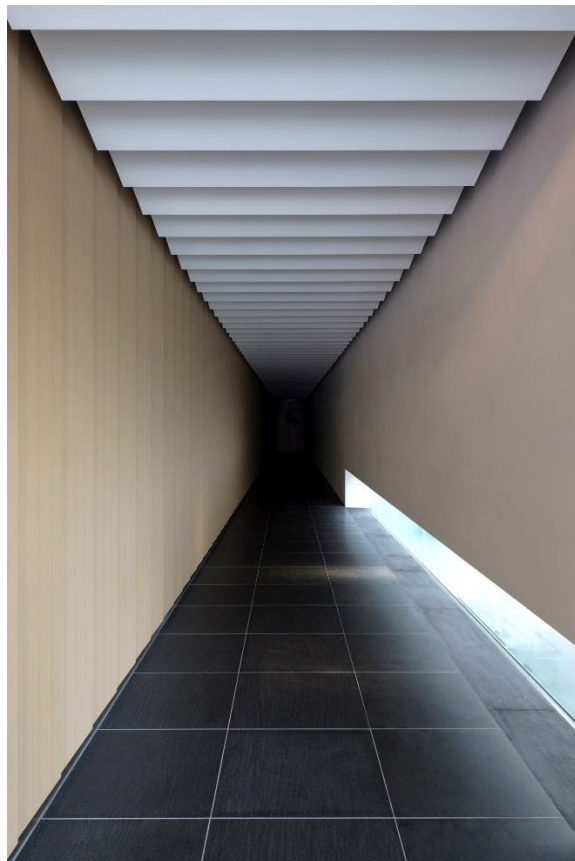




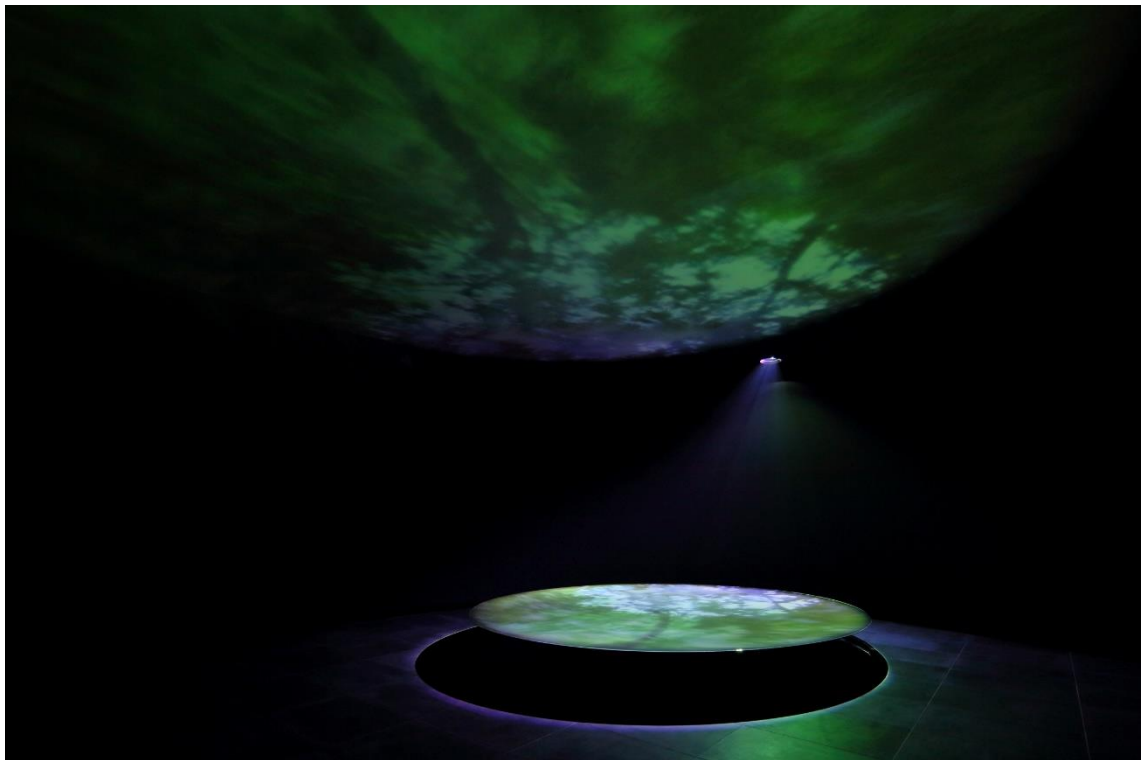
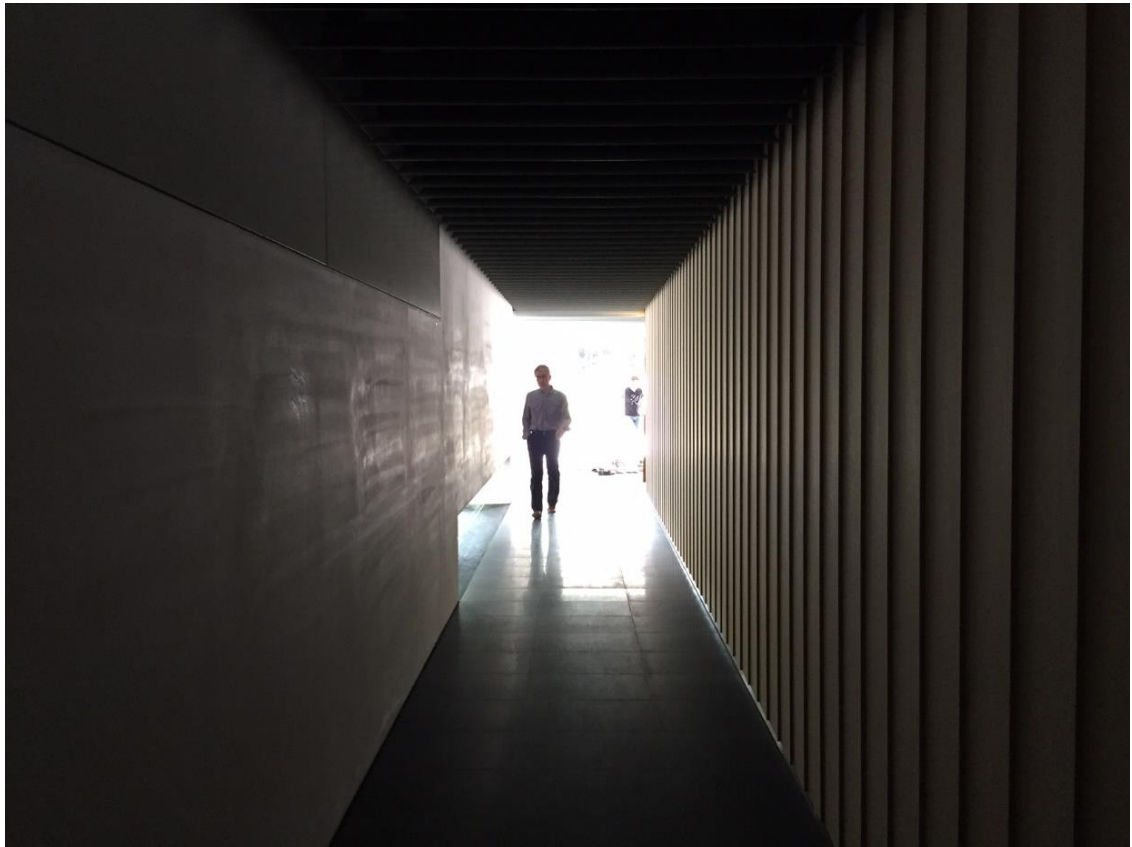






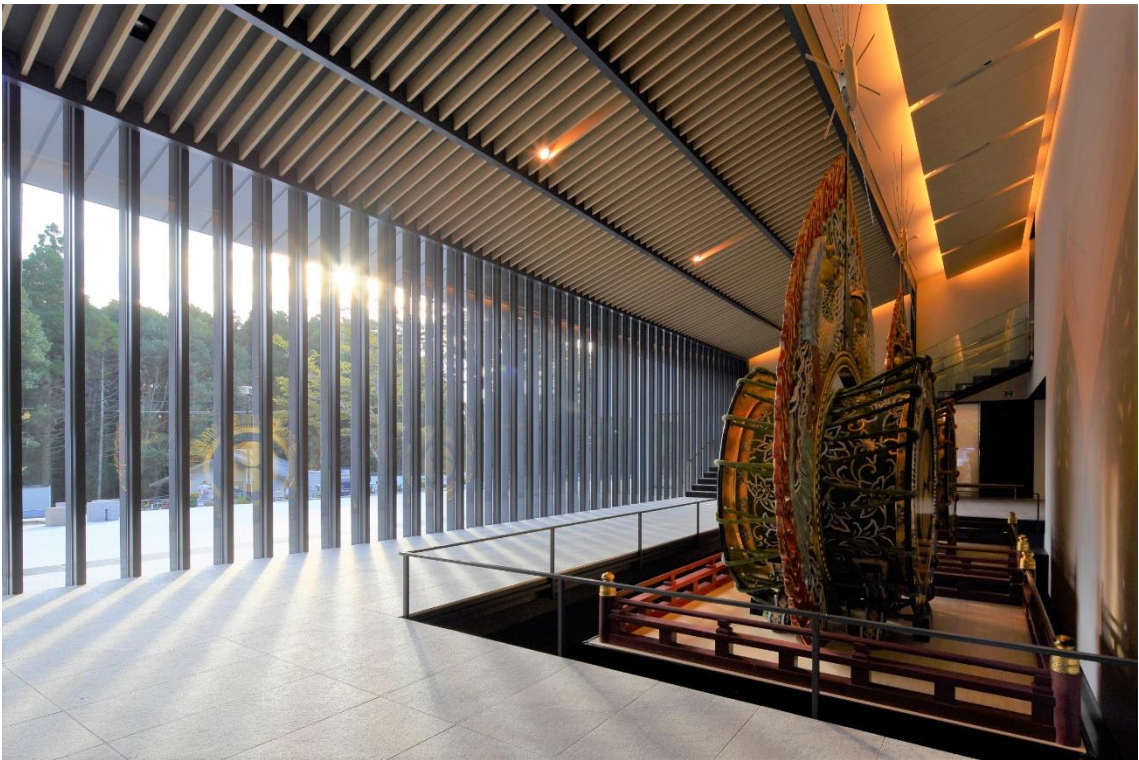




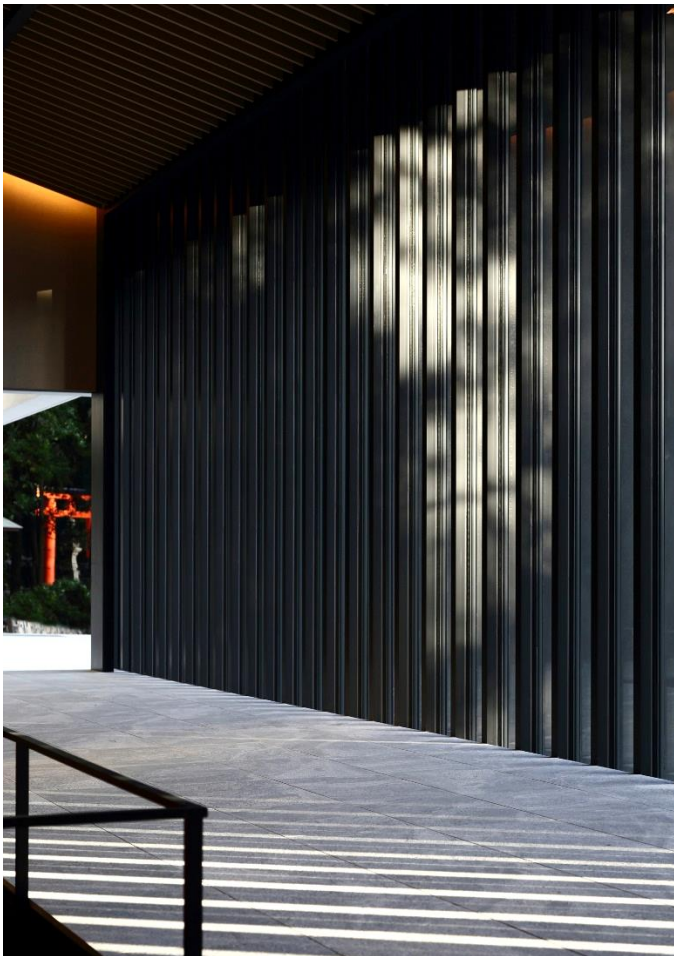


















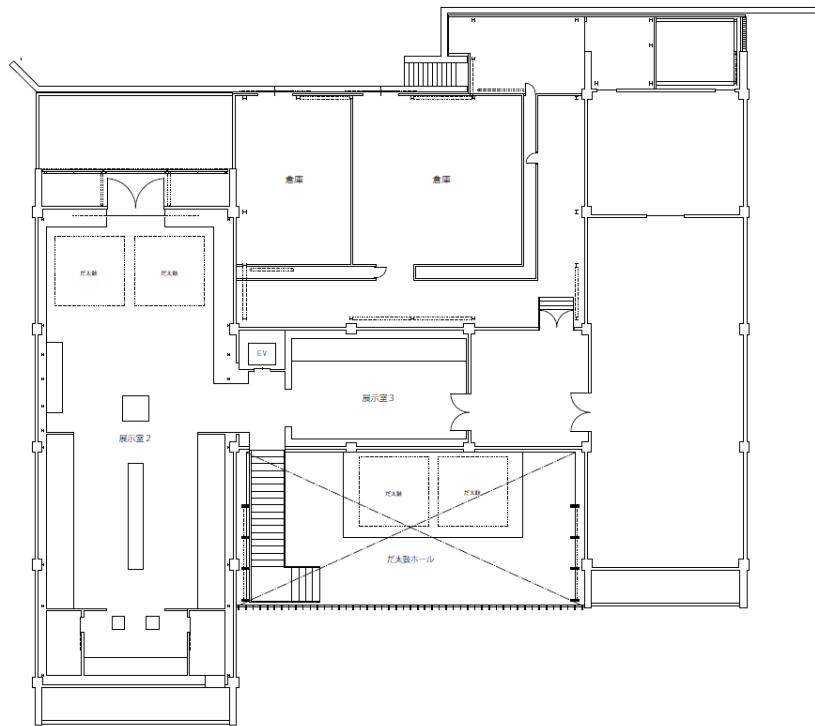








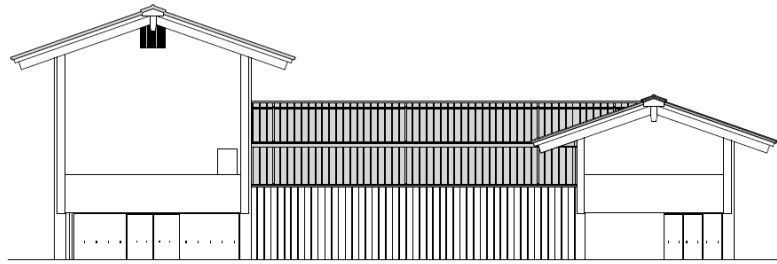
site plan S= 1/1000



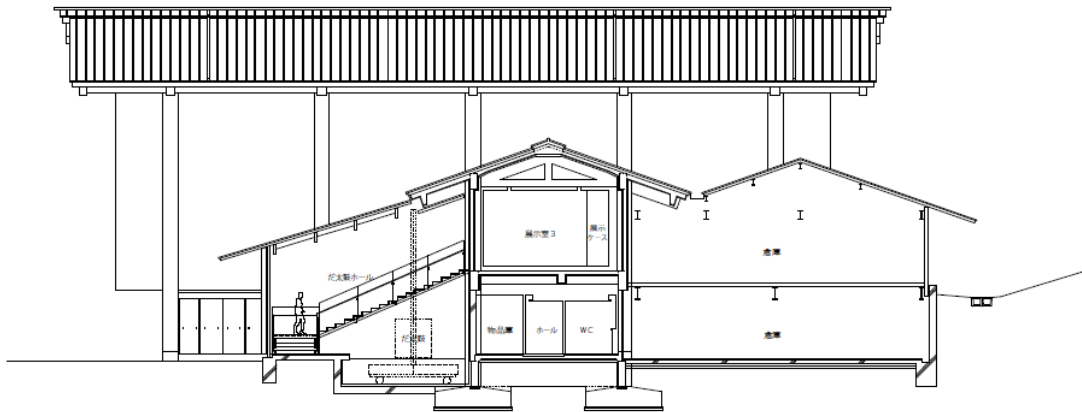
2F plan S= 1/200

2F Plan





Elevation



Section

Kasugataisya Museum is located in the precincts of Nara-Kasuga-Taisha Shrine, to showcase their treasures. This is the museum renewal project which was originally designed by Yoshiro Taniguchi about 40 years ago.

Renovation in Sumiyoshi (housing), Tokyo, Japan (2011)



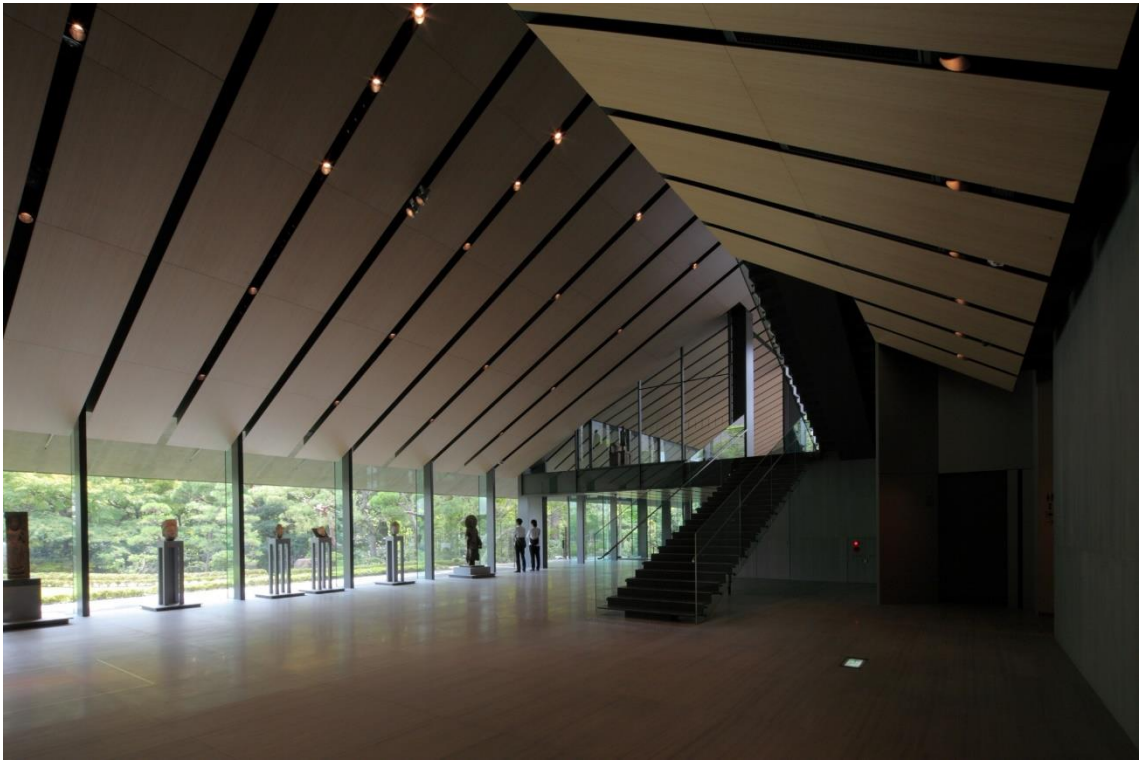




Nezu Museum (museum), Tokyo, Japan (2009)





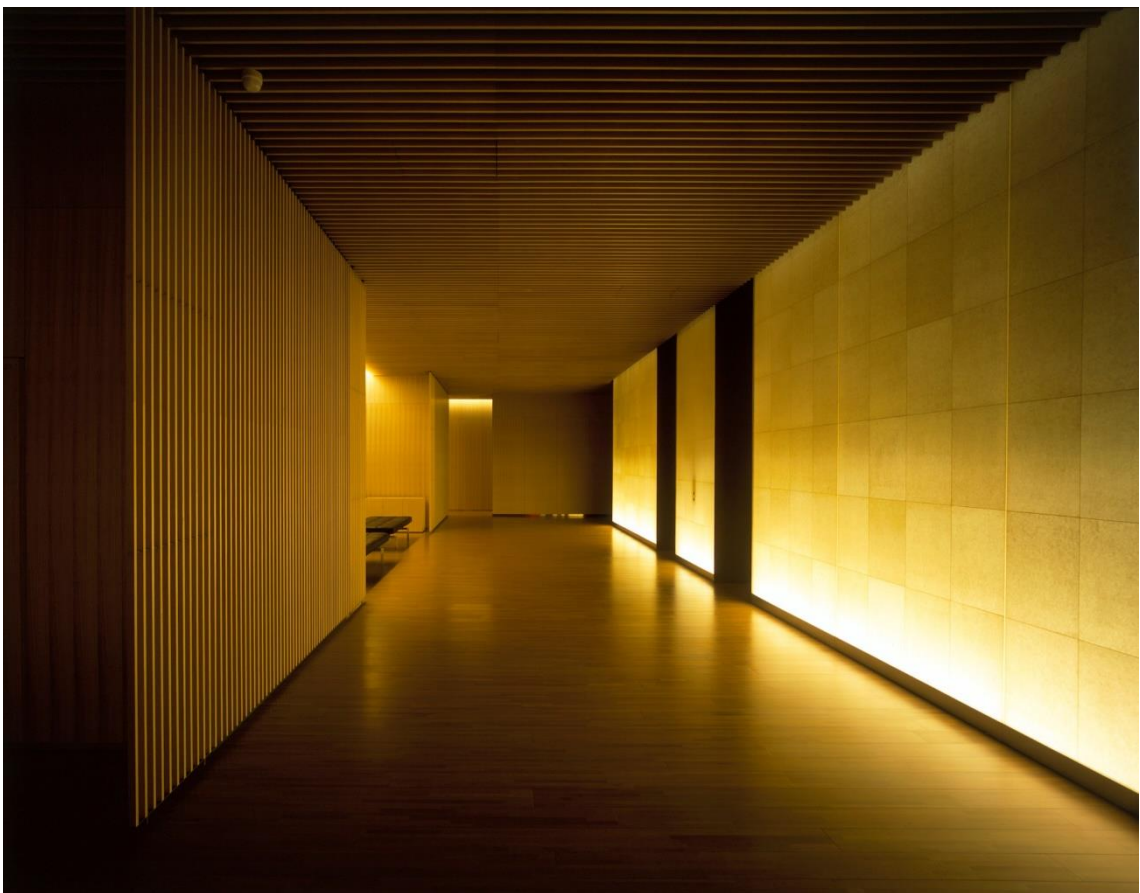


Nezucafe (café)      Tokyo, Japan (2009)





Suntory Museum of Art (museum), Tokyo, Japan (2007)







Akagi Jinja and Park Court Kagurazaka (shrine and Condominium), Tokyo, Japan (2010)









Forest/Floor (housing with tea-ceremony-room)

Karuizawa, Japan (2003)



